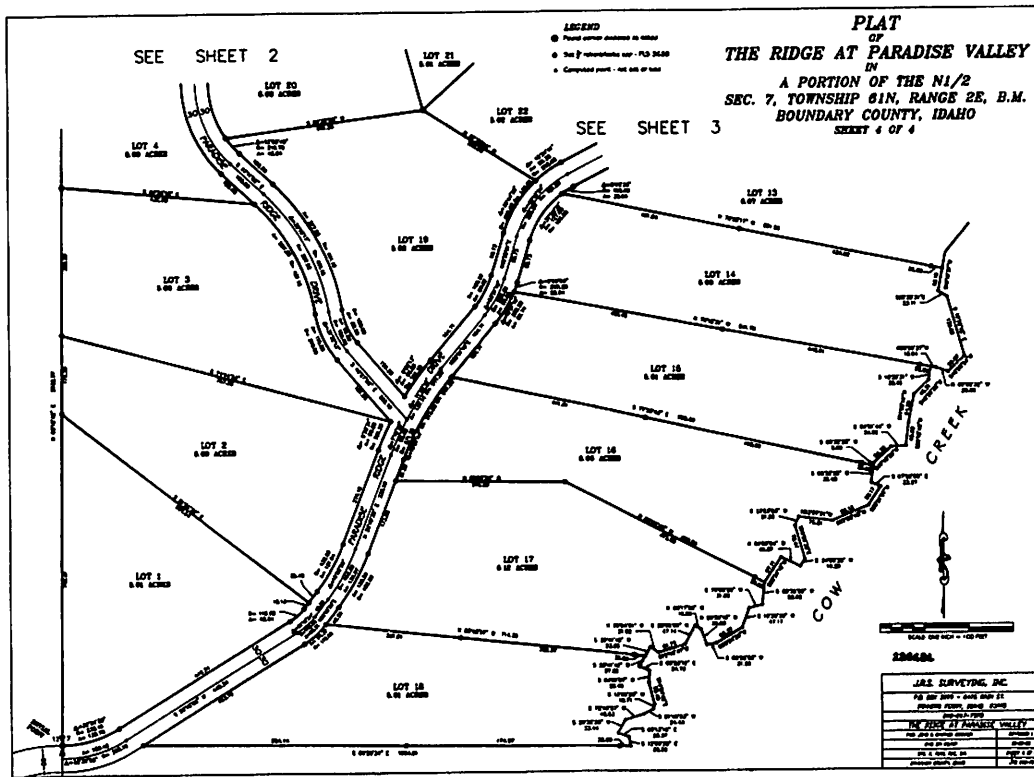


SEE SHEET 2

LEGEND
 ● Point corner address as shown
 ○ Not a reference corner - FD 3650
 + Computed point - not set of stake

PLAT
OF
THE RIDGE AT PARADISE VALLEY
IN
A PORTION OF THE N1/2
SEC. 7, TOWNSHIP 61N, RANGE 2E, B.M.
BOUNDARY COUNTY, IDAHO
 SHEET 4 OF 4

SEE SHEET 3



PLAT
OF
THE RIDGE AT PARADISE VALLEY
IN
A PORTION OF THE N1/2
SEC. 7, T9N, R2E, E.M.
BOUNDARY COUNTY, IDAHO
SHEET 3 OF 4

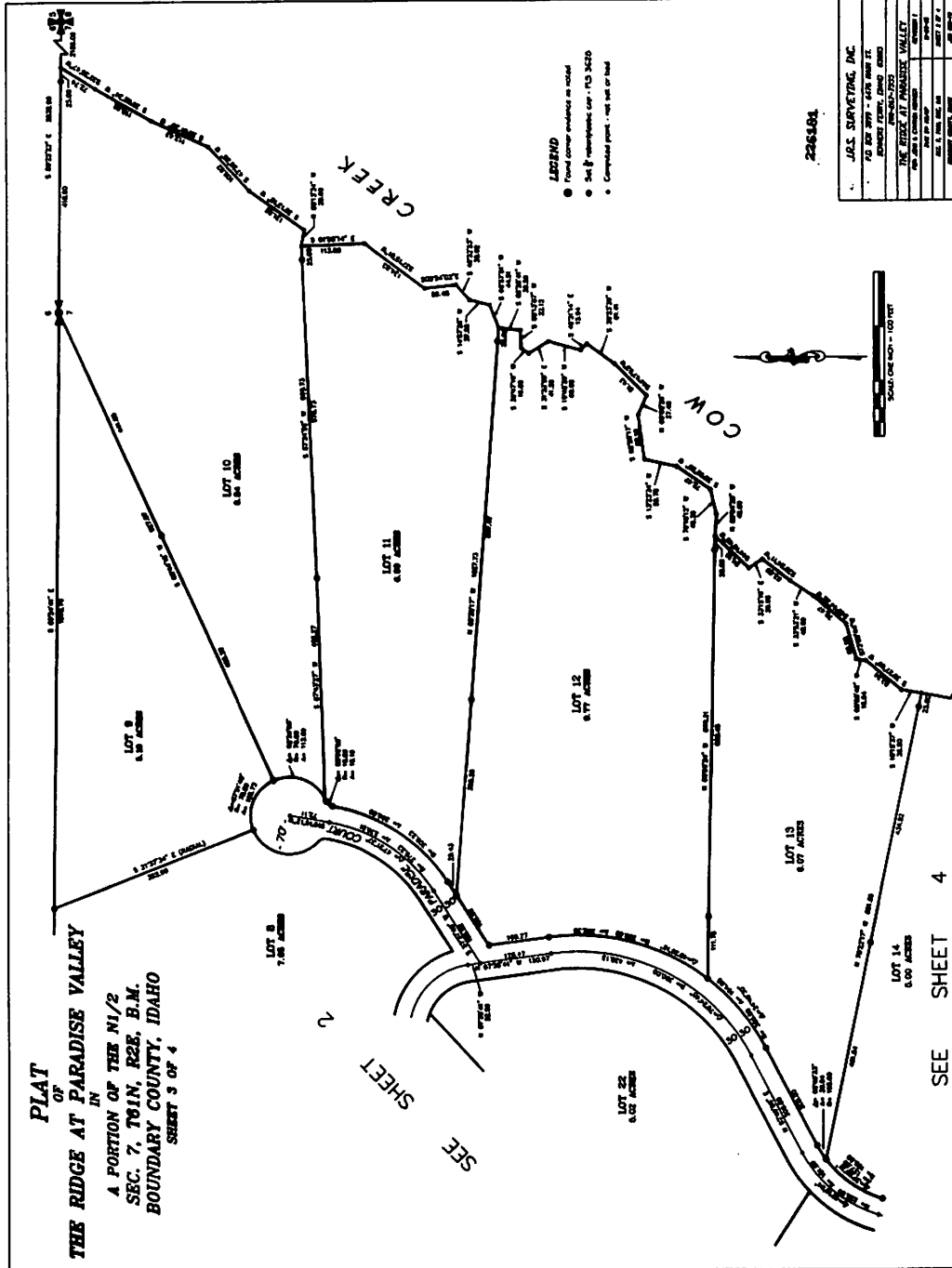
SEE SHEET 2

SEE SHEET 4

- LEGEND**
- Found corner evidence as noted
 - Set by miscellaneous map - PLS MCD
 - Computed point - not set or tied

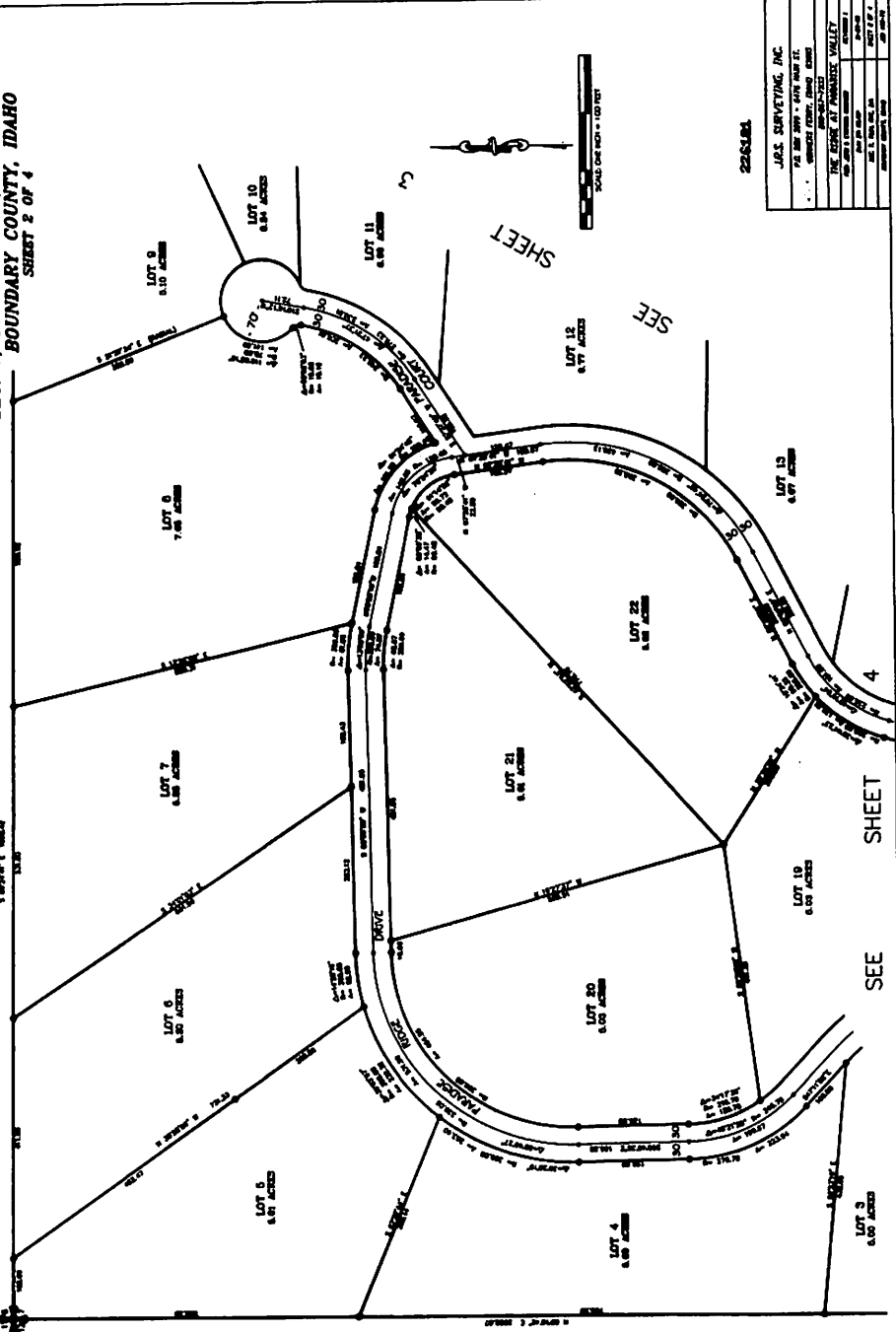
226181

J.B.S. SURVEYING, INC.
701 2ND ST. - 2ND FLOOR
BOZEMAN, MONTANA 59717
PHONE 325-2222
THE RIDGE AT PARADISE VALLEY
PLAT NO. 1
DATE OF SURVEY
DATE OF PLAT
DATE OF RECORD



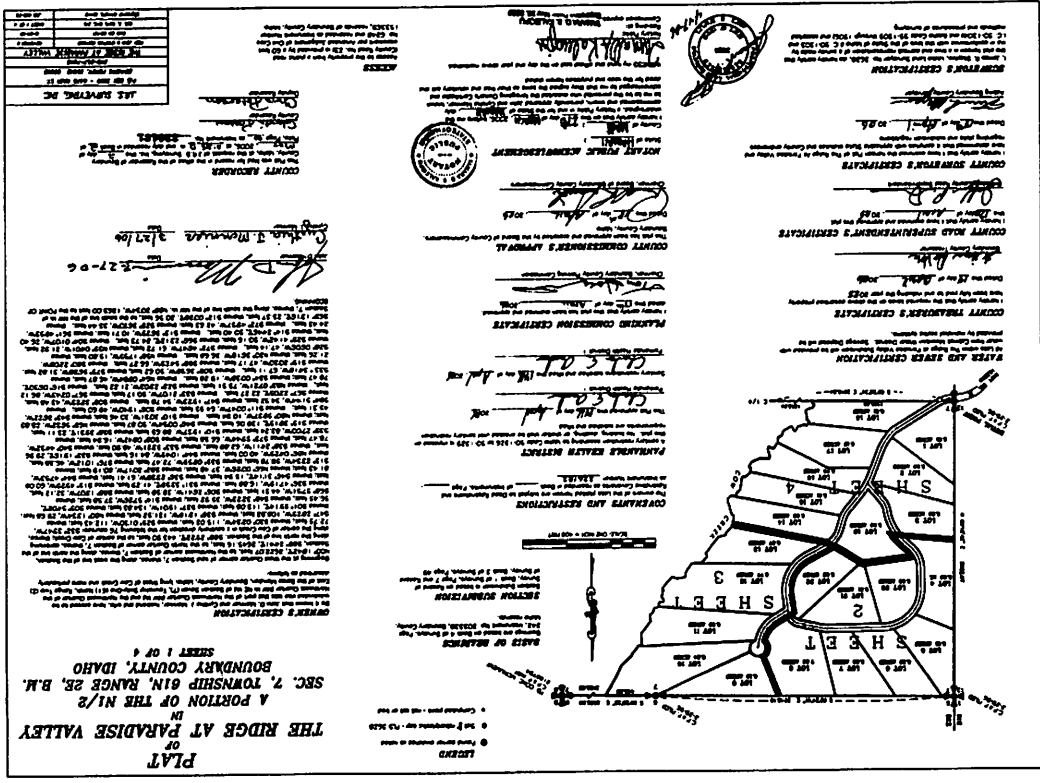
PLAT
IN
THE RIDGE AT PARADISE VALLEY
IN
A PORTION OF THE N1/2
SEC. 7, TOWNSHIP 61N, RANGE 2E, B.M.
BOUNDARY COUNTY, IDAHO
SHEET 2 OF 4

- LEGEND**
- Found corner readings on record
 - 3/4" P. magnetic cap - T.C.S. 54220
 - Computed point - not set or used



2254381

J.P.S. SURVEYING, INC.	DATE: 12/15/2010
743 2ND ST. - 2ND FLOOR	PROJECT: PARADISE VALLEY
BOZEMAN, MONT. 59717-3203	BY: J.P.S.
THE RIDGE AT PARADISE VALLEY	
PLAT NO. 2254381	DATE: 12/15/2010
BY: J.P.S.	DATE: 12/15/2010
SCALE: AS SHOWN	DATE: 12/15/2010



ACRES	1.00
SQUARE FEET	43,560
CUBIC FEET	1,057,000
CUBIC YARDS	123,000
CUBIC METERS	12,300
CUBIC FEET PER SECOND	105,700
CUBIC METERS PER SECOND	10,570
CUBIC FEET PER MINUTE	6,342
CUBIC METERS PER MINUTE	634
CUBIC FEET PER HOUR	380,520
CUBIC METERS PER HOUR	38,052
CUBIC FEET PER DAY	9,132,480
CUBIC METERS PER DAY	913,248
CUBIC FEET PER YEAR	332,240,640
CUBIC METERS PER YEAR	33,224,064

THE RIDGE AT PARADISE VALLEY
PLAT
 IN
A PORTION OF THE N1/2
SECTION 7, TOWNSHIP 61N, RANGE 28E, B.M.
 SHEET 1 OF 4

1. The purpose of this plat is to show the location and extent of the several parcels of land shown hereon, and to show the location and extent of the several easements and other interests shown hereon, and to show the location and extent of the several other interests shown hereon.

2. The survey was made by J. H. Wilson and J. H. Wilson & Sons, Surveyors, on the 15th day of August, 1928, and the same was approved by the Board of County Commissioners of the County of Lincoln, Nebraska, on the 15th day of August, 1928.

3. The survey was made in accordance with the provisions of the Act to amend the Act to provide for the survey of land in Nebraska, approved July 15, 1909, and the Act to amend the Act to provide for the survey of land in Nebraska, approved July 15, 1909, and the Act to amend the Act to provide for the survey of land in Nebraska, approved July 15, 1909.

4. The survey was made in accordance with the provisions of the Act to amend the Act to provide for the survey of land in Nebraska, approved July 15, 1909, and the Act to amend the Act to provide for the survey of land in Nebraska, approved July 15, 1909, and the Act to amend the Act to provide for the survey of land in Nebraska, approved July 15, 1909.

SECTION 7 CERTIFICATE
 I, J. H. Wilson, Surveyor, do hereby certify that the above plat was made by me and J. H. Wilson & Sons, Surveyors, on the 15th day of August, 1928, and that the same was approved by the Board of County Commissioners of the County of Lincoln, Nebraska, on the 15th day of August, 1928.

COUNTY ROAD SURVEYOR'S CERTIFICATE
 I, J. H. Wilson, Surveyor, do hereby certify that the above plat was made by me and J. H. Wilson & Sons, Surveyors, on the 15th day of August, 1928, and that the same was approved by the Board of County Commissioners of the County of Lincoln, Nebraska, on the 15th day of August, 1928.

COUNTY ENGINEER'S CERTIFICATE
 I, J. H. Wilson, Surveyor, do hereby certify that the above plat was made by me and J. H. Wilson & Sons, Surveyors, on the 15th day of August, 1928, and that the same was approved by the Board of County Commissioners of the County of Lincoln, Nebraska, on the 15th day of August, 1928.

NOTARY PUBLIC CERTIFICATE
 I, J. H. Wilson, Surveyor, do hereby certify that the above plat was made by me and J. H. Wilson & Sons, Surveyors, on the 15th day of August, 1928, and that the same was approved by the Board of County Commissioners of the County of Lincoln, Nebraska, on the 15th day of August, 1928.

STATE AND FEDERAL CERTIFICATE
 I, J. H. Wilson, Surveyor, do hereby certify that the above plat was made by me and J. H. Wilson & Sons, Surveyors, on the 15th day of August, 1928, and that the same was approved by the Board of County Commissioners of the County of Lincoln, Nebraska, on the 15th day of August, 1928.

PLANNING COMMISSION CERTIFICATE
 I, J. H. Wilson, Surveyor, do hereby certify that the above plat was made by me and J. H. Wilson & Sons, Surveyors, on the 15th day of August, 1928, and that the same was approved by the Board of County Commissioners of the County of Lincoln, Nebraska, on the 15th day of August, 1928.

COUNTY COMMISSIONER'S APPROVAL
 I, J. H. Wilson, Surveyor, do hereby certify that the above plat was made by me and J. H. Wilson & Sons, Surveyors, on the 15th day of August, 1928, and that the same was approved by the Board of County Commissioners of the County of Lincoln, Nebraska, on the 15th day of August, 1928.

NOTARY PUBLIC CERTIFICATE
 I, J. H. Wilson, Surveyor, do hereby certify that the above plat was made by me and J. H. Wilson & Sons, Surveyors, on the 15th day of August, 1928, and that the same was approved by the Board of County Commissioners of the County of Lincoln, Nebraska, on the 15th day of August, 1928.

STATE AND FEDERAL CERTIFICATE
 I, J. H. Wilson, Surveyor, do hereby certify that the above plat was made by me and J. H. Wilson & Sons, Surveyors, on the 15th day of August, 1928, and that the same was approved by the Board of County Commissioners of the County of Lincoln, Nebraska, on the 15th day of August, 1928.