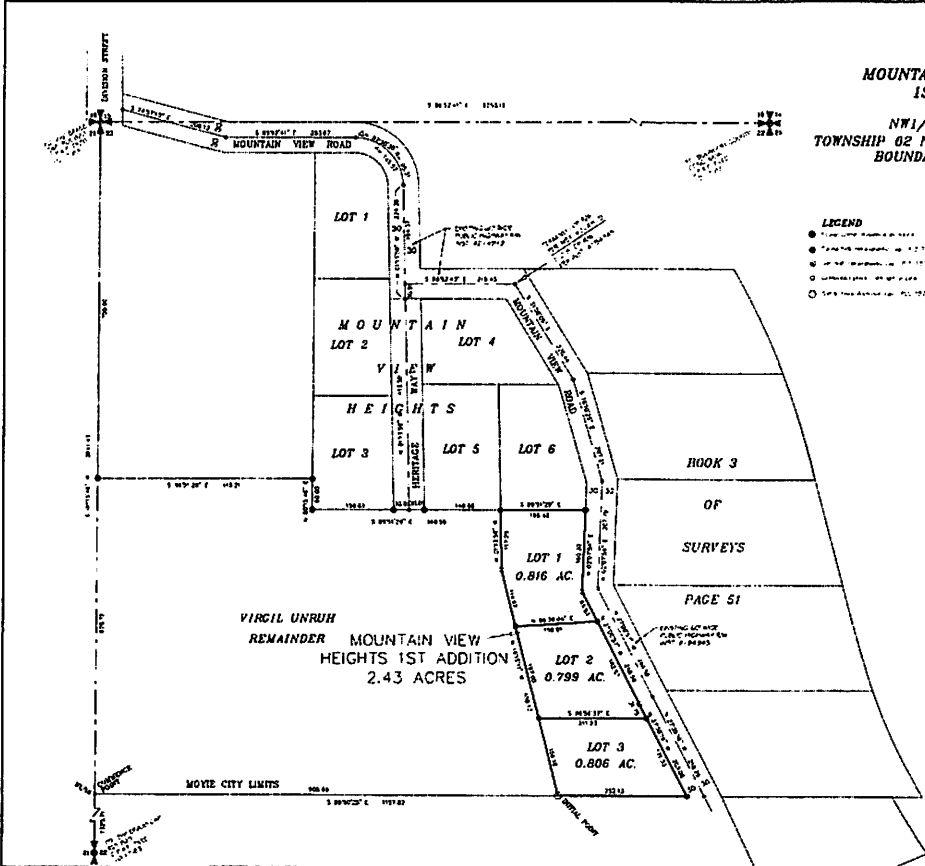
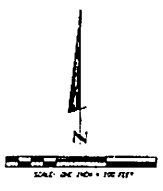


**PLAT
OF
MOUNTAIN VIEW HEIGHTS
1ST ADDITION
IN THE
NW1/4 OF SECTION 22
TOWNSHIP 02 NORTH, RANGE 2 EAST, B.M.
BOUNDARY COUNTY, IDAHO
SHEET 1 OF 2**



- LEGEND**
- 1/4" = 100' (Scale of 1/4" = 100')
 - 1/4" = 100' (Scale of 1/4" = 100')
 - 1/4" = 100' (Scale of 1/4" = 100')
 - 1/4" = 100' (Scale of 1/4" = 100')
 - 1/4" = 100' (Scale of 1/4" = 100')



SURVEYOR'S CERTIFICATION
I, J. R. S., do hereby certify that the above described plat was prepared by me or under my direct supervision and that I am a duly licensed surveyor in the State of Idaho.



COUNTY RECORDER
I, [Name], County Recorder, do hereby certify that the above described plat was recorded in my office on this [Date] day of [Month], 20[Year].

J. R. S. SURVEYING, INC.	
P.O. BOX 2079 - 84304 MOYIE, ID	PHONE (208) 835-0855
FAX (208) 835-0855	
PLAT-MOUNTAIN VIEW HEIGHTS 1ST ADD.	
DATE	2007-10-12
BY	J.R.S.
DATE	2007-10-12
BY	J.R.S.

