

**MEADOW CREEK ESTATES-
PHASE I**

in the
N1/2 of Section 8,
162N, R2E, B. M.
Boundary County, Idaho

227313

DEED RESTRICTIONS AND COVENANTS

The terms of the deed herein are subject to the
Restrictions of Covenants, Conditions, and Restrictions for
Oval Estates recorded by Instrument Number 227313.

BASIS OF BEARINGS

Bearing taken on the line of Survey
from the Point of Beginning, 19-01

SEWER CERTIFICATION

Bearing shown on this map are for the
purpose of establishing the location of
the sewer lines.

PLANNING COMMISSION CERTIFICATION

I hereby certify that the plan has been reviewed and approved
on this date of 7/6/06.

[Signature]
Planning Commission

COUNTY TREASURER'S CERTIFICATION

I hereby certify that the taxes on this plan have been fully paid
on this date of 7/6/06.

[Signature]
County Treasurer

COUNTY SURVEYOR'S CERTIFICATION

I hereby certify that I have examined the survey and approved
that it conforms with applicable State Statutes and County Ordinance
regarding plans and subdivision regulations.

7-6-06
[Signature]
County Surveyor

COUNTY ROAD SUPERINTENDENT'S CERTIFICATION

I hereby certify that I have examined and approved this plan and
that it conforms with applicable State Statutes and County Ordinance
regarding plans and subdivision regulations.

[Signature]
County Road Superintendent

WATER SYSTEM CERTIFICATION

The lots in this subdivision will be served by private wells.

STATE HEALTH DISTRICT CERTIFICATION

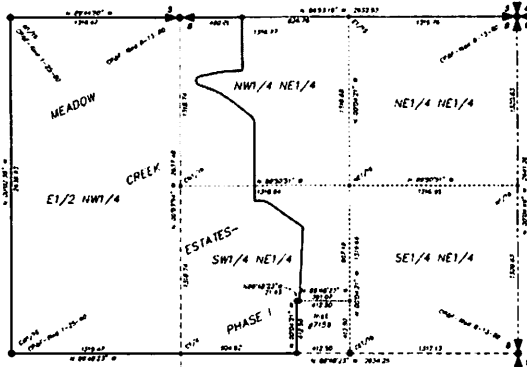
I hereby certify that this plan complies with the requirements of
the State Health District regarding the subdivision of land for
residential purposes.

[Signature]
State Health District

COUNTY COMMISSIONERS' CERTIFICATION

This plan has been approved and registered by the Board of County
Commissioners of Boundary County, Idaho, on this date of 7/6/06.

[Signature]
County Commissioners

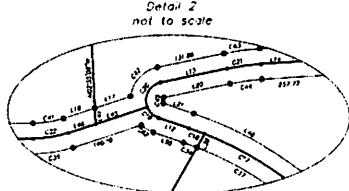


LEGEND

- 1/4" = 100' (1/4" = 100')
- 1/4" = 100' (1/4" = 100')
- 1/4" = 100' (1/4" = 100')
- 1/4" = 100' (1/4" = 100')

NOTE

1. All rights of way shall be found by the Meadow Creek Estate Phase I plat.
2. The remaining property in Section 8 east of Meadow Creek Estate Phase I shall be subdivided and will be shown as Meadow Creek Estate Phase II. The terms of this plat shall apply to all lots in this subdivision.
3. The north-south line of Section 8 east of Meadow Creek Estate Phase I is a private road.
4. The plat is SUBJECT TO any reservation and RIGHT OF WAY in any plat or instrument on file in the public records of Boundary County, Idaho, and the plat is subject to any plat or instrument on file in the public records of Boundary County, Idaho, which may affect the property to be subdivided in this plat.
5. Location of Fire Crack is approximate.



CURVE TABLE

Station	Curve Data	Station	Curve Data
C1+00.00	R=150.00 Δ=45.00° Ch=112.50m	C1+300.00	R=150.00 Δ=45.00° Ch=112.50m
C1+05.00	R=150.00 Δ=45.00° Ch=112.50m	C1+35.00	R=150.00 Δ=45.00° Ch=112.50m
C1+10.00	R=150.00 Δ=45.00° Ch=112.50m	C1+40.00	R=150.00 Δ=45.00° Ch=112.50m
C1+15.00	R=150.00 Δ=45.00° Ch=112.50m	C1+45.00	R=150.00 Δ=45.00° Ch=112.50m
C1+20.00	R=150.00 Δ=45.00° Ch=112.50m	C1+50.00	R=150.00 Δ=45.00° Ch=112.50m
C1+25.00	R=150.00 Δ=45.00° Ch=112.50m	C1+55.00	R=150.00 Δ=45.00° Ch=112.50m
C1+30.00	R=150.00 Δ=45.00° Ch=112.50m	C1+60.00	R=150.00 Δ=45.00° Ch=112.50m
C1+35.00	R=150.00 Δ=45.00° Ch=112.50m	C1+65.00	R=150.00 Δ=45.00° Ch=112.50m
C1+40.00	R=150.00 Δ=45.00° Ch=112.50m	C1+70.00	R=150.00 Δ=45.00° Ch=112.50m
C1+45.00	R=150.00 Δ=45.00° Ch=112.50m	C1+75.00	R=150.00 Δ=45.00° Ch=112.50m
C1+50.00	R=150.00 Δ=45.00° Ch=112.50m	C1+80.00	R=150.00 Δ=45.00° Ch=112.50m
C1+55.00	R=150.00 Δ=45.00° Ch=112.50m	C1+85.00	R=150.00 Δ=45.00° Ch=112.50m
C1+60.00	R=150.00 Δ=45.00° Ch=112.50m	C1+90.00	R=150.00 Δ=45.00° Ch=112.50m
C1+65.00	R=150.00 Δ=45.00° Ch=112.50m	C1+95.00	R=150.00 Δ=45.00° Ch=112.50m
C1+70.00	R=150.00 Δ=45.00° Ch=112.50m	C1+100.00	R=150.00 Δ=45.00° Ch=112.50m
C1+75.00	R=150.00 Δ=45.00° Ch=112.50m	C1+105.00	R=150.00 Δ=45.00° Ch=112.50m
C1+80.00	R=150.00 Δ=45.00° Ch=112.50m	C1+110.00	R=150.00 Δ=45.00° Ch=112.50m
C1+85.00	R=150.00 Δ=45.00° Ch=112.50m	C1+115.00	R=150.00 Δ=45.00° Ch=112.50m
C1+90.00	R=150.00 Δ=45.00° Ch=112.50m	C1+120.00	R=150.00 Δ=45.00° Ch=112.50m
C1+95.00	R=150.00 Δ=45.00° Ch=112.50m	C1+125.00	R=150.00 Δ=45.00° Ch=112.50m
C1+100.00	R=150.00 Δ=45.00° Ch=112.50m	C1+130.00	R=150.00 Δ=45.00° Ch=112.50m
C1+105.00	R=150.00 Δ=45.00° Ch=112.50m	C1+135.00	R=150.00 Δ=45.00° Ch=112.50m
C1+110.00	R=150.00 Δ=45.00° Ch=112.50m	C1+140.00	R=150.00 Δ=45.00° Ch=112.50m
C1+115.00	R=150.00 Δ=45.00° Ch=112.50m	C1+145.00	R=150.00 Δ=45.00° Ch=112.50m
C1+120.00	R=150.00 Δ=45.00° Ch=112.50m	C1+150.00	R=150.00 Δ=45.00° Ch=112.50m
C1+125.00	R=150.00 Δ=45.00° Ch=112.50m	C1+155.00	R=150.00 Δ=45.00° Ch=112.50m
C1+130.00	R=150.00 Δ=45.00° Ch=112.50m	C1+160.00	R=150.00 Δ=45.00° Ch=112.50m
C1+135.00	R=150.00 Δ=45.00° Ch=112.50m	C1+165.00	R=150.00 Δ=45.00° Ch=112.50m
C1+140.00	R=150.00 Δ=45.00° Ch=112.50m	C1+170.00	R=150.00 Δ=45.00° Ch=112.50m
C1+145.00	R=150.00 Δ=45.00° Ch=112.50m	C1+175.00	R=150.00 Δ=45.00° Ch=112.50m
C1+150.00	R=150.00 Δ=45.00° Ch=112.50m	C1+180.00	R=150.00 Δ=45.00° Ch=112.50m
C1+155.00	R=150.00 Δ=45.00° Ch=112.50m	C1+185.00	R=150.00 Δ=45.00° Ch=112.50m
C1+160.00	R=150.00 Δ=45.00° Ch=112.50m	C1+190.00	R=150.00 Δ=45.00° Ch=112.50m
C1+165.00	R=150.00 Δ=45.00° Ch=112.50m	C1+195.00	R=150.00 Δ=45.00° Ch=112.50m
C1+170.00	R=150.00 Δ=45.00° Ch=112.50m	C1+200.00	R=150.00 Δ=45.00° Ch=112.50m
C1+175.00	R=150.00 Δ=45.00° Ch=112.50m	C1+205.00	R=150.00 Δ=45.00° Ch=112.50m
C1+180.00	R=150.00 Δ=45.00° Ch=112.50m	C1+210.00	R=150.00 Δ=45.00° Ch=112.50m
C1+185.00	R=150.00 Δ=45.00° Ch=112.50m	C1+215.00	R=150.00 Δ=45.00° Ch=112.50m
C1+190.00	R=150.00 Δ=45.00° Ch=112.50m	C1+220.00	R=150.00 Δ=45.00° Ch=112.50m
C1+195.00	R=150.00 Δ=45.00° Ch=112.50m	C1+225.00	R=150.00 Δ=45.00° Ch=112.50m
C1+200.00	R=150.00 Δ=45.00° Ch=112.50m	C1+230.00	R=150.00 Δ=45.00° Ch=112.50m
C1+205.00	R=150.00 Δ=45.00° Ch=112.50m	C1+235.00	R=150.00 Δ=45.00° Ch=112.50m
C1+210.00	R=150.00 Δ=45.00° Ch=112.50m	C1+240.00	R=150.00 Δ=45.00° Ch=112.50m
C1+215.00	R=150.00 Δ=45.00° Ch=112.50m	C1+245.00	R=150.00 Δ=45.00° Ch=112.50m
C1+220.00	R=150.00 Δ=45.00° Ch=112.50m	C1+250.00	R=150.00 Δ=45.00° Ch=112.50m
C1+225.00	R=150.00 Δ=45.00° Ch=112.50m	C1+255.00	R=150.00 Δ=45.00° Ch=112.50m
C1+230.00	R=150.00 Δ=45.00° Ch=112.50m	C1+260.00	R=150.00 Δ=45.00° Ch=112.50m
C1+235.00	R=150.00 Δ=45.00° Ch=112.50m	C1+265.00	R=150.00 Δ=45.00° Ch=112.50m
C1+240.00	R=150.00 Δ=45.00° Ch=112.50m	C1+270.00	R=150.00 Δ=45.00° Ch=112.50m
C1+245.00	R=150.00 Δ=45.00° Ch=112.50m	C1+275.00	R=150.00 Δ=45.00° Ch=112.50m
C1+250.00	R=150.00 Δ=45.00° Ch=112.50m	C1+280.00	R=150.00 Δ=45.00° Ch=112.50m
C1+255.00	R=150.00 Δ=45.00° Ch=112.50m	C1+285.00	R=150.00 Δ=45.00° Ch=112.50m
C1+260.00	R=150.00 Δ=45.00° Ch=112.50m	C1+290.00	R=150.00 Δ=45.00° Ch=112.50m
C1+265.00	R=150.00 Δ=45.00° Ch=112.50m	C1+295.00	R=150.00 Δ=45.00° Ch=112.50m
C1+270.00	R=150.00 Δ=45.00° Ch=112.50m	C1+300.00	R=150.00 Δ=45.00° Ch=112.50m
C1+275.00	R=150.00 Δ=45.00° Ch=112.50m		
C1+280.00	R=150.00 Δ=45.00° Ch=112.50m		
C1+285.00	R=150.00 Δ=45.00° Ch=112.50m		
C1+290.00	R=150.00 Δ=45.00° Ch=112.50m		
C1+295.00	R=150.00 Δ=45.00° Ch=112.50m		
C1+300.00	R=150.00 Δ=45.00° Ch=112.50m		