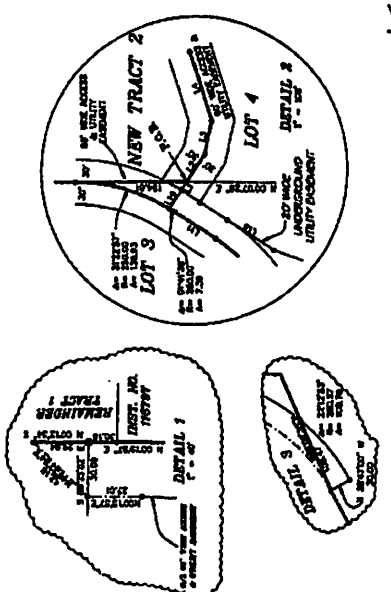
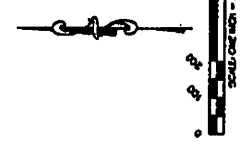


# PLAT AND LYLE FARMS SUBDIVISION BOUNDARY LINE ADJUSTMENT.

IN THE  
SE1/4 OF SECTION 35  
TOWNSHIP 62 NORTH, RANGE 1 EAST, B.M.  
BOUNDARY COUNTY, IDAHO

FOR  
GARVIN LYLE  
SHEET 1 OF 2

- LEGEND
- FOUND CORNER EVIDENCE AS NOTED
  - ▲ FOUND S.P. BEAR AND PLATONIC COP. - N.D. 2023
  - FOUND S.P. BEAR AND PLATONIC COP. - N.D. 2027
  - SET BY: BEAR AND PLATONIC COP. - N.D. 2027
  - COMPUTED POINT
  - POWER POINTS OF P.V.C. BEAR FOR ELEC. SERVICE
  - ▲ FOUND CORNER



**SURVEYOR'S CERTIFICATION**

I, John R. Surber, Idaho Land Surveyor No. 2875, do hereby certify that the plat herein is a true and correct representation of a survey made by me or under my supervision, in accordance with the provisions of the Idaho Land Survey Act of 1979, and that the same conform to the provisions of the Idaho Land Survey Act of 1979 and accepted methods and procedures of the profession.

**J.R.S. SURVEYING, INC.**  
700 W. 2ND ST. - 4TH FLOOR  
BOZEMAN, MONT. 59717

**J.R.S. SURVEYING, INC.**  
200 W. 2ND ST. - 4TH FLOOR  
BOZEMAN, MONT. 59717

**J.R.S. SURVEYING, INC.**  
200 W. 2ND ST. - 4TH FLOOR  
BOZEMAN, MONT. 59717

**COUNTY RECORDER**  
The fee for recording a plat is \$1.00 per page plus \$1.00 per page for the recording of a plat. The fee for recording a plat is \$1.00 per page plus \$1.00 per page for the recording of a plat. The fee for recording a plat is \$1.00 per page plus \$1.00 per page for the recording of a plat.

**CLERK**  
BOZEMAN, MONT. 59717

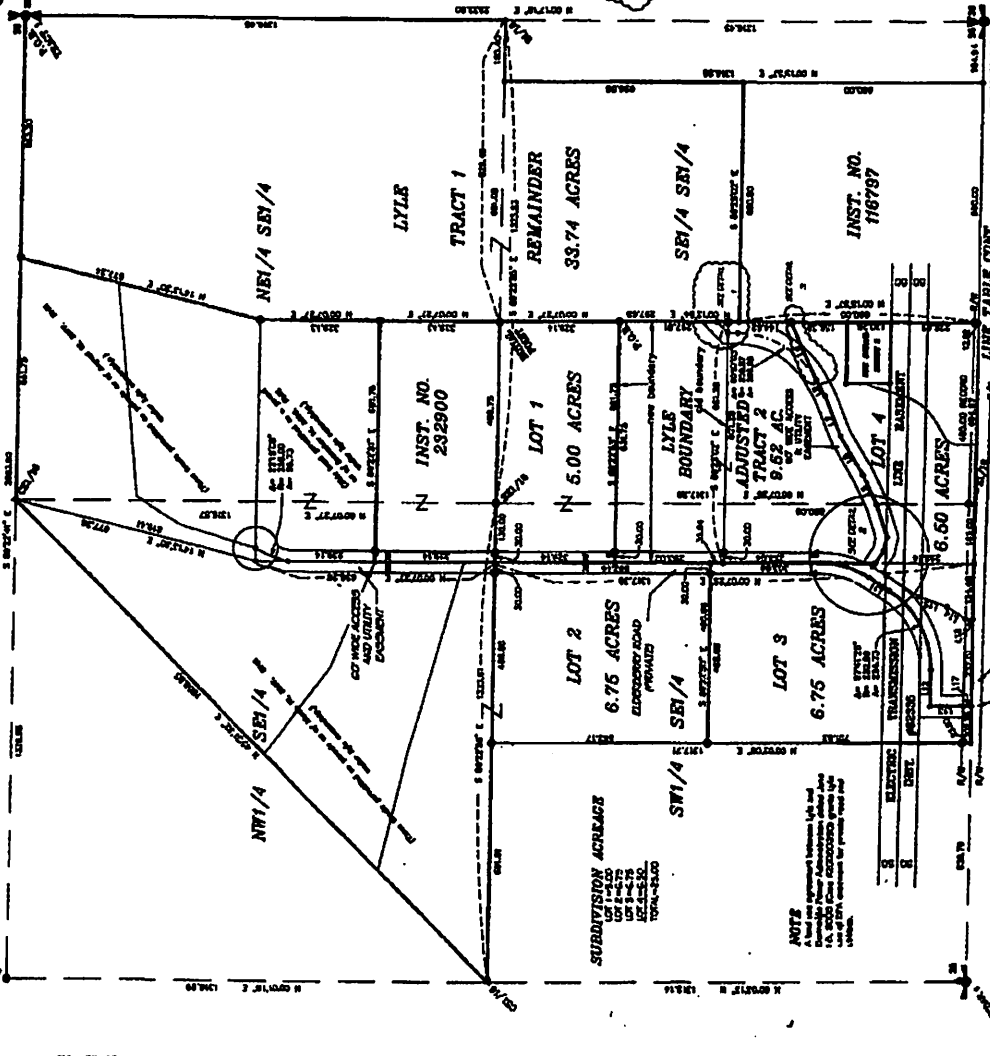
258790

**ADJACENT SURVEYS OF RECORD**

BOOK 3 OF SURVEYS, PAGE 174  
BOOK 3 OF SURVEYS, PAGE 145  
BOOK 3 OF SURVEYS, PAGE 230  
BOOK 3 OF SURVEYS, PAGE 100  
BOOK 4 OF SURVEYS, PAGE 80

**BASIS OF BEARINGS**

Computed on the basis of the true meridian as shown on the map of Idaho, Book 3 of Surveys, Page 174, at Township No. 51 E 13 N.



**LINE TABLE**

LINE	BEARING	DISTANCE
1	N 89° 59' 10" E	10.00
2	S 89° 59' 10" E	10.00
3	N 89° 59' 10" E	10.00
4	S 89° 59' 10" E	10.00
5	N 89° 59' 10" E	10.00
6	S 89° 59' 10" E	10.00
7	N 89° 59' 10" E	10.00
8	S 89° 59' 10" E	10.00
9	N 89° 59' 10" E	10.00
10	S 89° 59' 10" E	10.00
11	N 89° 59' 10" E	10.00
12	S 89° 59' 10" E	10.00
13	N 89° 59' 10" E	10.00
14	S 89° 59' 10" E	10.00
15	N 89° 59' 10" E	10.00
16	S 89° 59' 10" E	10.00
17	N 89° 59' 10" E	10.00
18	S 89° 59' 10" E	10.00
19	N 89° 59' 10" E	10.00
20	S 89° 59' 10" E	10.00

**LINE TABLE CONT.**

LINE	BEARING	DISTANCE
21	N 89° 59' 10" E	10.00
22	S 89° 59' 10" E	10.00
23	N 89° 59' 10" E	10.00
24	S 89° 59' 10" E	10.00
25	N 89° 59' 10" E	10.00
26	S 89° 59' 10" E	10.00
27	N 89° 59' 10" E	10.00
28	S 89° 59' 10" E	10.00
29	N 89° 59' 10" E	10.00
30	S 89° 59' 10" E	10.00
31	N 89° 59' 10" E	10.00
32	S 89° 59' 10" E	10.00
33	N 89° 59' 10" E	10.00
34	S 89° 59' 10" E	10.00
35	N 89° 59' 10" E	10.00
36	S 89° 59' 10" E	10.00
37	N 89° 59' 10" E	10.00
38	S 89° 59' 10" E	10.00
39	N 89° 59' 10" E	10.00
40	S 89° 59' 10" E	10.00

**NOTE**

APPROXIMATE BEARINGS AND DISTANCES FOR THE ADJUSTED BOUNDARY LINE ARE SHOWN IN RED ON THIS PLAT. THE ADJUSTED BOUNDARY LINE IS SHOWN IN RED ON THIS PLAT. THE ADJUSTED BOUNDARY LINE IS SHOWN IN RED ON THIS PLAT.

**LINE TABLE**

LINE	BEARING	DISTANCE
41	N 89° 59' 10" E	10.00
42	S 89° 59' 10" E	10.00
43	N 89° 59' 10" E	10.00
44	S 89° 59' 10" E	10.00
45	N 89° 59' 10" E	10.00
46	S 89° 59' 10" E	10.00
47	N 89° 59' 10" E	10.00
48	S 89° 59' 10" E	10.00
49	N 89° 59' 10" E	10.00
50	S 89° 59' 10" E	10.00
51	N 89° 59' 10" E	10.00
52	S 89° 59' 10" E	10.00
53	N 89° 59' 10" E	10.00
54	S 89° 59' 10" E	10.00
55	N 89° 59' 10" E	10.00
56	S 89° 59' 10" E	10.00
57	N 89° 59' 10" E	10.00
58	S 89° 59' 10" E	10.00
59	N 89° 59' 10" E	10.00
60	S 89° 59' 10" E	10.00

