

**PLAT
OF
BALL SUBDIVISION**
IN
NW1/4 SE1/4 OF SECTION 16
TOWNSHIP 62 NORTH, RANGE 2 EAST, B.M.
BOUNDARY COUNTY, IDAHO
SHEET 1 OF 2

- LEGEND**
- ⊙ FOUND CORNER EVIDENCE AS NOTED
 - FOUND 3/4" REBAR AND PLASTIC CAP - PLS 6200
 - △ FOUND 3/4" REBAR
 - ▲ FOUND 3/4" REBAR AND PLASTIC CAP - PLS 3626
 - ⊙ SET 3/4" REBAR AND PLASTIC CAP - PLS 7077
 - COMPUTED POINT

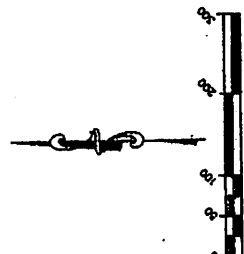
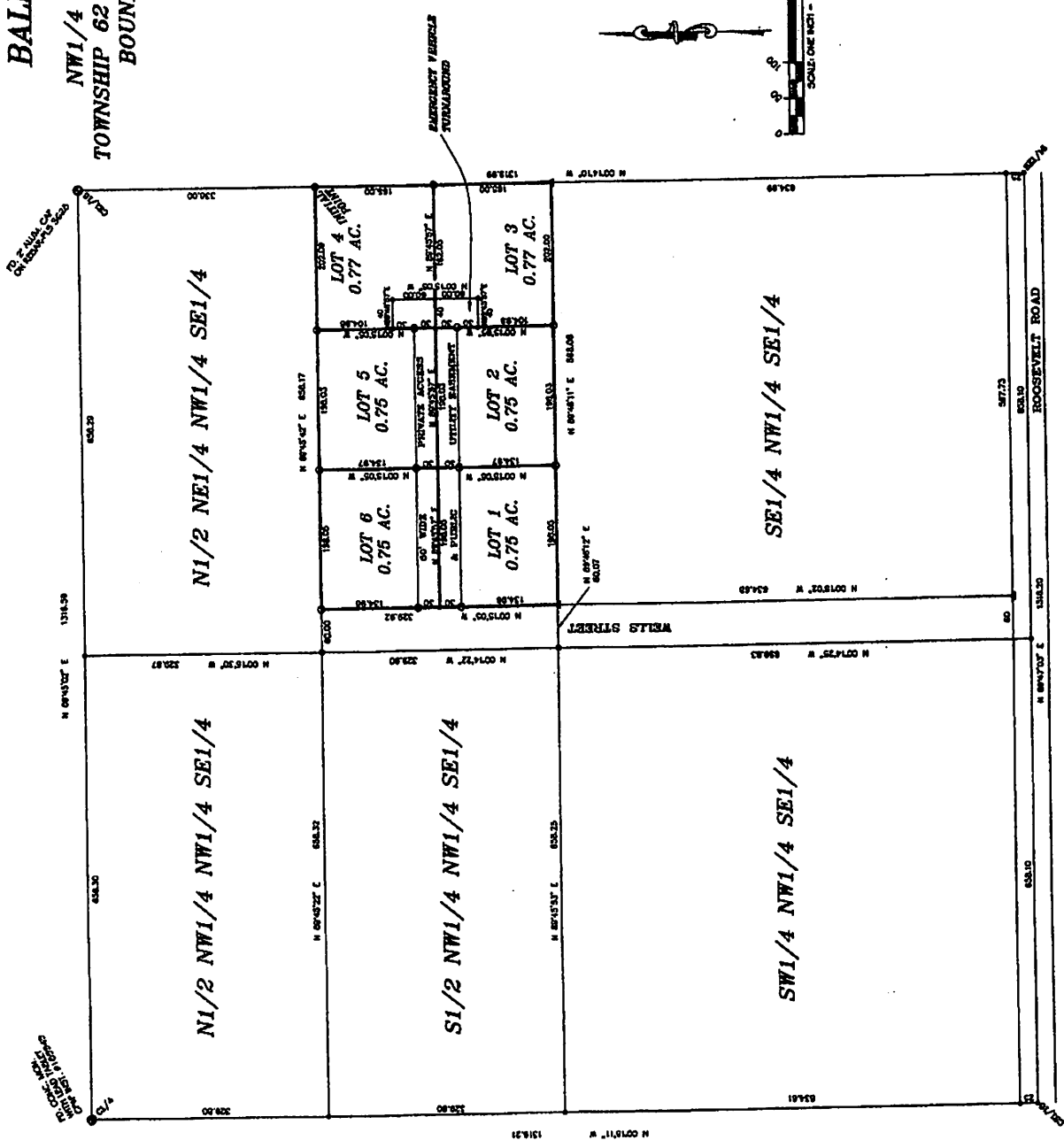
SURVEYOR'S CERTIFICATION
I, John D. Mendenhall, Idaho Land Surveyor No. 7077, do hereby certify that this plat was prepared by me or under my direct supervision and that I am a duly licensed and qualified land surveyor under the laws of the State of Idaho. I.C. 20-1-202 and I.C. 20-1-204 and Idaho Code 25-1-102 through 1900 and accepted methods and procedures of surveying.



COUNTY RECORDER
This plat was filed for record in the Office of the Recorder of the County of Boundary, Idaho, on this 14th day of May, 2014, at 2:11 P.M. and was recorded in Book 5 of Plat Map 36, as follows to: 0664033

John D. Mendenhall
Surveyor
Boundary County, Idaho

J.R.S. SURVEYING, INC.	
PO BOX 3898-0478 SAUL	
BOONVILLE, MISSOURI 64608	
(800) 887-7485	
PLAT - BALL SUBDIVISION	
FILED 05/14/2014	
PLAT NO. 36	
PLAT MAP 36	
PLAT NO. 36	
PLAT NO. 36	
PLAT NO. 36	
PLAT NO. 36	
PLAT NO. 36	



PLAT MAP 36
BOUNDARY COUNTY, IDAHO

PLAT MAP 36
BOUNDARY COUNTY, IDAHO

