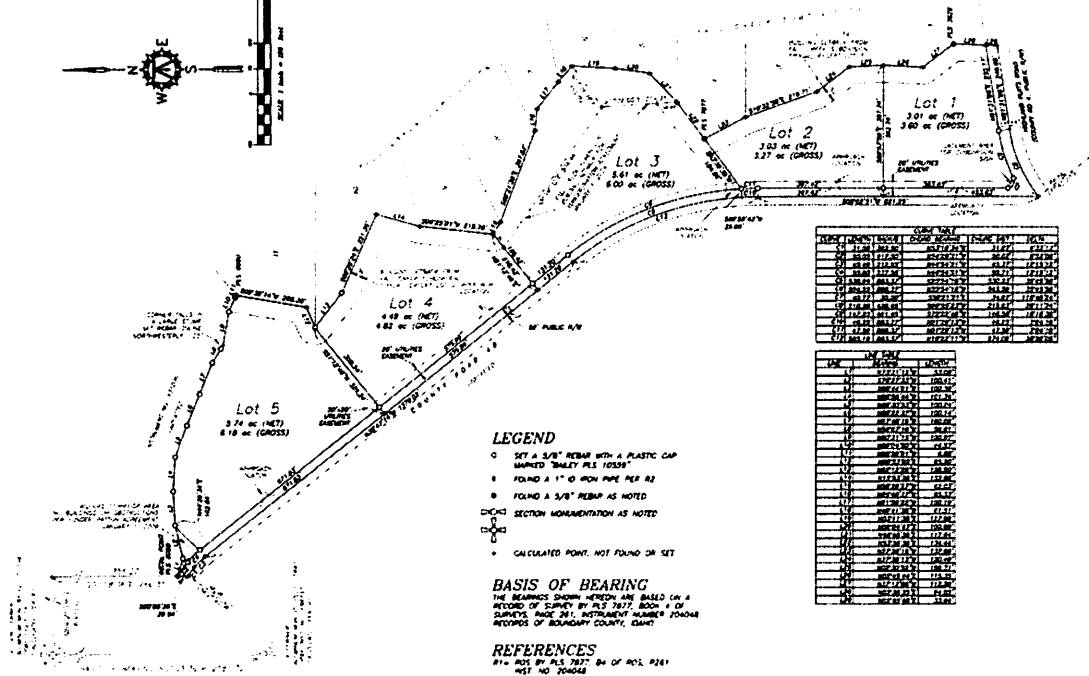
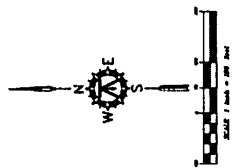


FALL CREEK ESTATES

LOCATED IN SECTION 10, TOWNSHIP 60 NORTH, RANGE 1 WEST,
BOISE MERIDIAN, BOUNDARY COUNTY, IDAHO



LINE	INCHES	FOOT	DEGREE	BEARING	PLAT
1	1.12	1.12	0	S 89° 57' 00" W	112.72
2	1.12	1.12	0	S 89° 57' 00" W	112.72
3	1.12	1.12	0	S 89° 57' 00" W	112.72
4	1.12	1.12	0	S 89° 57' 00" W	112.72
5	1.12	1.12	0	S 89° 57' 00" W	112.72
6	1.12	1.12	0	S 89° 57' 00" W	112.72
7	1.12	1.12	0	S 89° 57' 00" W	112.72
8	1.12	1.12	0	S 89° 57' 00" W	112.72
9	1.12	1.12	0	S 89° 57' 00" W	112.72
10	1.12	1.12	0	S 89° 57' 00" W	112.72
11	1.12	1.12	0	S 89° 57' 00" W	112.72
12	1.12	1.12	0	S 89° 57' 00" W	112.72
13	1.12	1.12	0	S 89° 57' 00" W	112.72
14	1.12	1.12	0	S 89° 57' 00" W	112.72
15	1.12	1.12	0	S 89° 57' 00" W	112.72
16	1.12	1.12	0	S 89° 57' 00" W	112.72
17	1.12	1.12	0	S 89° 57' 00" W	112.72
18	1.12	1.12	0	S 89° 57' 00" W	112.72
19	1.12	1.12	0	S 89° 57' 00" W	112.72
20	1.12	1.12	0	S 89° 57' 00" W	112.72
21	1.12	1.12	0	S 89° 57' 00" W	112.72
22	1.12	1.12	0	S 89° 57' 00" W	112.72
23	1.12	1.12	0	S 89° 57' 00" W	112.72
24	1.12	1.12	0	S 89° 57' 00" W	112.72
25	1.12	1.12	0	S 89° 57' 00" W	112.72
26	1.12	1.12	0	S 89° 57' 00" W	112.72
27	1.12	1.12	0	S 89° 57' 00" W	112.72
28	1.12	1.12	0	S 89° 57' 00" W	112.72
29	1.12	1.12	0	S 89° 57' 00" W	112.72
30	1.12	1.12	0	S 89° 57' 00" W	112.72

LINE	FOOT	DEGREE	BEARING	PLAT
1	112.72	0	S 89° 57' 00" W	112.72
2	112.72	0	S 89° 57' 00" W	112.72
3	112.72	0	S 89° 57' 00" W	112.72
4	112.72	0	S 89° 57' 00" W	112.72
5	112.72	0	S 89° 57' 00" W	112.72
6	112.72	0	S 89° 57' 00" W	112.72
7	112.72	0	S 89° 57' 00" W	112.72
8	112.72	0	S 89° 57' 00" W	112.72
9	112.72	0	S 89° 57' 00" W	112.72
10	112.72	0	S 89° 57' 00" W	112.72
11	112.72	0	S 89° 57' 00" W	112.72
12	112.72	0	S 89° 57' 00" W	112.72
13	112.72	0	S 89° 57' 00" W	112.72
14	112.72	0	S 89° 57' 00" W	112.72
15	112.72	0	S 89° 57' 00" W	112.72
16	112.72	0	S 89° 57' 00" W	112.72
17	112.72	0	S 89° 57' 00" W	112.72
18	112.72	0	S 89° 57' 00" W	112.72
19	112.72	0	S 89° 57' 00" W	112.72
20	112.72	0	S 89° 57' 00" W	112.72
21	112.72	0	S 89° 57' 00" W	112.72
22	112.72	0	S 89° 57' 00" W	112.72
23	112.72	0	S 89° 57' 00" W	112.72
24	112.72	0	S 89° 57' 00" W	112.72
25	112.72	0	S 89° 57' 00" W	112.72
26	112.72	0	S 89° 57' 00" W	112.72
27	112.72	0	S 89° 57' 00" W	112.72
28	112.72	0	S 89° 57' 00" W	112.72
29	112.72	0	S 89° 57' 00" W	112.72
30	112.72	0	S 89° 57' 00" W	112.72

LEGEND

- SET A 3/8" REBAR WITH A PLASTIC CAP MARKED "MILEY PLS 10559"
- FOUND A 1" O IRON PIPE PER R2
- ⊙ FOUND A 3/8" REBAR AS NOTED
- SECTION MONUMENTATION AS NOTED
- ⊕ CALCULATED POINT, NOT FOUND OR SET

BASIS OF BEARING
THE BEARINGS SHOWN HEREON ARE BASED ON A RECORD OF SURVEY BY PLS 7877, BOOK 4 OF SURVEYS, PAGE 261, INSTRUMENT NUMBER 704048 RECORDS OF BOUNDARY COUNTY, IDAHO

REFERENCES
 #1 - ADS BY PLS 7877, BK OF ADS, P261, INSTR. NO. 704048
 #2 - FULL CREEK SUBDIVISION, BK OF PLATS, PL. INSTR. NO. 107825
 #3 - ADS BY PLS 8030, BK OF ADS, P283, INSTR. NO. 109743

TUGNER, BROWN & VERMEER, INC.
 ENGINEERING AND LAND SURVEYING
 101 S. 200 E., Tropic, ID 83456
 PHONE: 863-4400 FAX: 863-4401
 WWW: TUGNER.COM

Robert C. Vermeer
 Robert C. Vermeer
 August 21, 2016

